

To protect, maintain, enhance and restore California's marine ecosystems for their ecological values and their use and enjoyment by the public through good science and effective communication.

California Department of Fish and Wildlife, Marine Region

Image above: marbled godwit (David T. Gomez)
below: snowy egret (Jerry Kirkhart)

Moss Landing Harbor
(831) 633-2461 (day)
(831) 970-3334 (night)
www.mosslandingharbor.dst.ca.us

California Department of Fish and Wildlife

For more information:
www.wildlife.ca.gov

For boundaries and regulations, go to:
www.wildlife.ca.gov/MPAs

Help stop poaching & polluting, call:
1-888-334-CALTIP (1-888-334-2258)

Report lost fishing gear:
1-888-491-GEAR (4237)
or
www.lostfishinggear.org

Learn more about clean boating at:
www.BoatingCleanandGreen.com
415-904-6905

Help protect Seabirds:
For tips and info on special closures, visit:
www.SeabirdProtectionNetwork.org

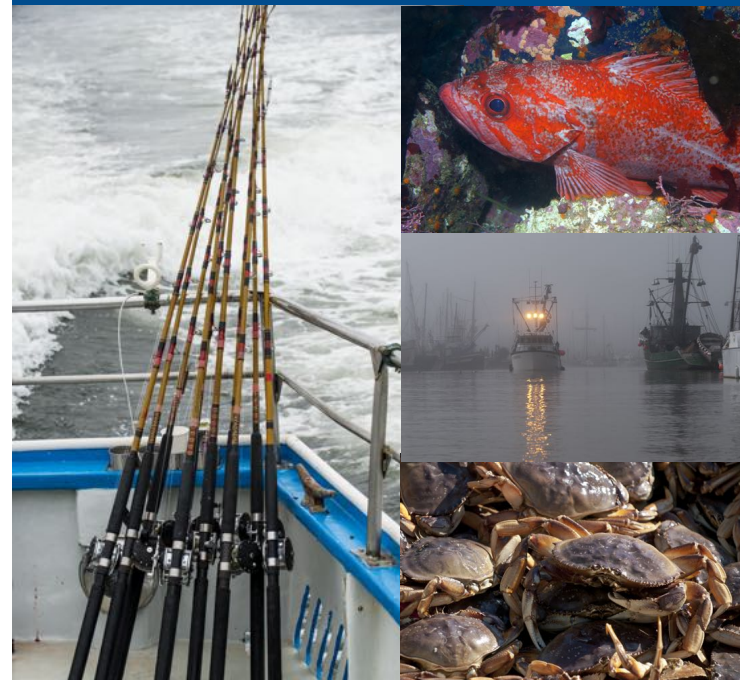
Marine Mammal Center:
415-289-7325; rescue@tmcc.org

This publication is available in alternate formats by contacting California Marine Sanctuary Foundation or CMSF@CaliforniaMSF.org



Cover: left, center and bottom right (Bart Selby);
top right (Chad King)

A Guide to Fishing and Marine Protected Areas Moss Landing Harbor



- Natural Bridges State Marine Reserve
- Elkhorn Slough State Marine Conservation Area
- Elkhorn Slough State Marine Reserve
- Moro Cojo Slough State Marine Reserve
- Soquel Canyon State Marine Conservation Area
- Portuguese Ledge State Marine Conservation Area
- Edward F. Ricketts State Marine Conservation Area
- Lovers Point-Julia Platt State Marine Reserve
- Pacific Grove Marine Gardens State Marine Conservation Area
- Asilomar State Marine Reserve

Fishing and California's Marine Protected Areas

What are Marine Protected Areas?

Just as the nation's parks, forests, and wilderness areas protect special places on land, California's state and federal marine protected areas (MPAs) safeguard our underwater wildlife, restore marine ecosystems, and preserve critical coastal habitats that allow sensitive marine communities to recover and thrive. California's State MPAs and National Marine Sanctuaries help ensure the ocean's bounty and beauty remain for future generations to enjoy.

Why does California need MPAs?

MPAs are recognized tools for protecting, enhancing and restoring marine life. MPAs foster healthy habitats and natural diversity, safeguarding the ocean's bounty for the economic and recreational opportunities of future generations.

How many MPAs are in California?

California was the first state in the nation to establish a statewide network of MPAs. There are now 124 MPAs from the border of Oregon down to the border of Mexico. The MPA network protects a variety of key habitats by linking MPAs along the coast.

Is Fishing Allowed in MPAs?

Fishing and the take of marine life such as shellfish or seaweed is not allowed in marine reserves and no-take marine conservation areas, which make up about half of California's marine protected areas. An inset map of local MPAs with their regulations is provided in this brochure.



Is Anchoring and Transit Allowed in MPAs?

Boats are allowed to anchor and transit through an MPA, however, fishing gear may not be deployed when in marine reserves or other MPAs that prohibit fishing for the species you have onboard. For additional information, scan the QR code on the right to visit the California Department of Fish and Wildlife's website.

Photo credit: top left (Tressa Bronner); top right (NOAA/NOS); middle center (Josh Pederson)

MPAs & Fishing Regulations



Scan the QR code to the left with your smartphone or other internet enabled device to visit the California Department of Fish and Wildlife's MPA mobile website.

The website allows you to search for information about MPA boundaries and regulations. You can also use your GPS location to locate the closest MPA(s) and determine whether or not you are currently in an MPA.

Go Fishing

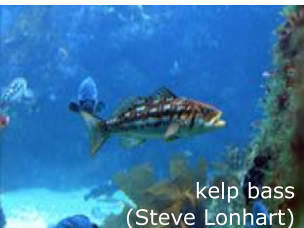
Recreational & Commercial Fishing Information:

phone: 831-649-2870

website: www.wildlife.ca.gov/fishing

Recreational Groundfish "hotline"
831-649-2801

Recreational Salmon "hotline"
707-576-3429



kelp bass
(Steve Lonhart)



kayaking
(Claire Fackler)



copper rockfish
(Chad King)



crab pots
(Bart Selby)



black rockfish
(Steve Lonhart)



dungeness crab
(Bart Selby)



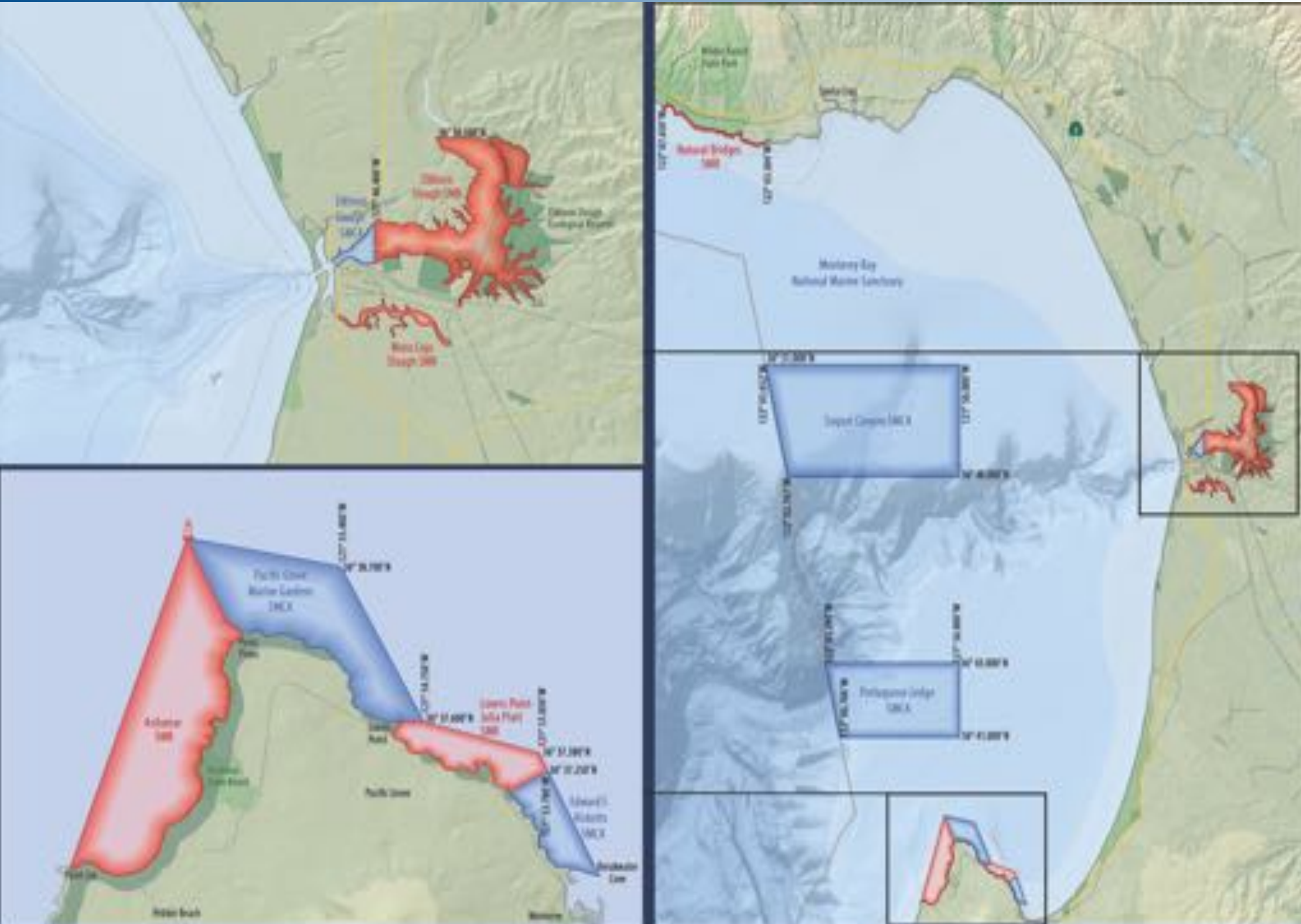
fishing boat
(Bart Selby)

MPA	Allowed Uses	MPA	Allowed Uses	MPA	Allowed Uses	MPA	Allowed Uses
Natural Bridges, Elkhorn Slough, Moro Cojo Slough, Lovers Point-Julia Platt, and Asilomar SMRs	It is unlawful to injure, damage, take, or possess any living, geological, or cultural marine resource.	It is unlawful to injure, damage, take, or possess any living, geological, or cultural marine resource for recreational and/or commercial purposes, with the following specified exceptions:	It is unlawful to injure, damage, take, or possess any living, geological, or cultural marine resource for recreational and/or commercial purposes, with the following specified exceptions:	Edward F. Ricketts SMCA	Recreational take of finfish by hook-and-line only, and clams from the slough's north shore near the Moss Landing State Wildlife Area, is allowed.	Edward F. Ricketts SMCA	Recreational take of finfish by hook-and-line only is allowed. Commercial take of giant kelp and bull kelp by hand is allowed.
		Soquel Canyon and Portuguese Ledge SMCAs	Recreational and commercial take of pelagic finfish is allowed. See current fishing regulations for definition of "pelagic finfish."	Elkhorn Slough SMCA	Recreational take of finfish by hook-and-line only, and clams from the slough's north shore near the Moss Landing State Wildlife Area, is allowed.	Pacific Grove Marine Gardens SMCA	Recreational take of finfish is allowed. Commercial take of giant kelp and bull kelp by hand is allowed.



Lingcod
©Chad King
NOAA/MBNMS

Moss Landing Harbor Marine Protected Areas (MPAs)



MPAs - Good for the Ocean; Good for You! Know the Rules Before You Head Out.

For Ocean Fishing Laws & Regulations, go to:
www.wildlife.ca.gov/Fishing/Ocean

For MPA boundaries, maps, coordinates, and allowed uses, go to: www.wildlife.ca.gov/MPAs

MPA-related questions?
Contact AskMPA@wildlife.ca.gov

Report Violations:
(888) 334-CalTIP, (888) 334-2258

Regulations

This document is provided as a courtesy, and does not replace the official laws and regulations found in the California Fish and Game Code or the California Code of Regulation Title 14.

- A fishing license is required for any fishing.
- All existing take regulations still apply in addition to the ones listed above.
- Unless otherwise stated, all non-consumptive recreational activities are allowed.
- "Take" means to hunt, pursue, catch, capture or kill fish, mollusks, or crustaceans or attempting to do so.

